

for immediate release:

Inman Gallery Opening:

**Tommy Fitzpatrick**  
*working spaces*

in the north gallery:

**Heyd Fontenot**  
*new works on paper*

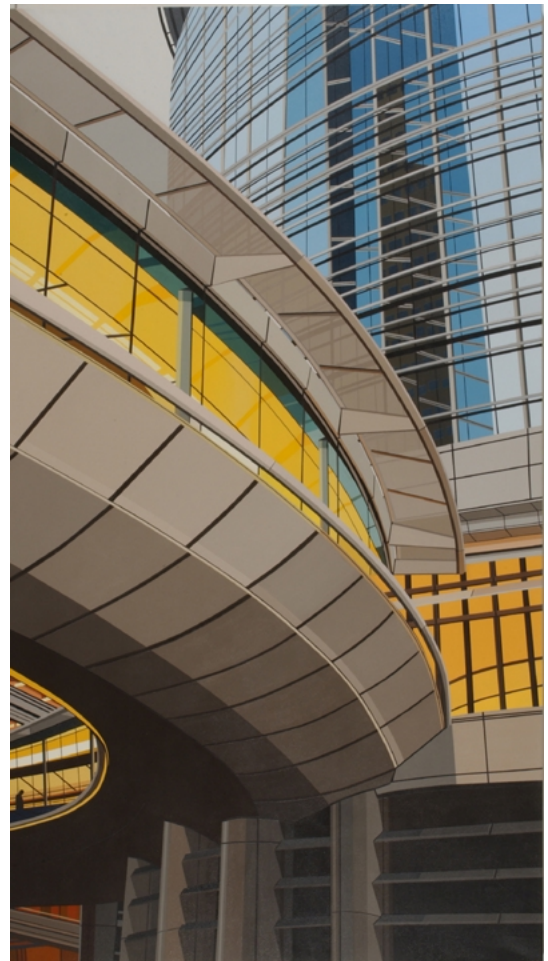
*January 14 - February 19, 2005*

We are pleased to announce the openings of two solo exhibitions of new work, in the main gallery "Working Spaces" by Tommy Fitzpatrick, and in the north gallery "New Works on Paper" by Heyd Fontenot. The opening reception for both is Friday January 14th, from 7-9. There will be an artists' talk and exhibition walkthrough beginning at 6:30 pm.

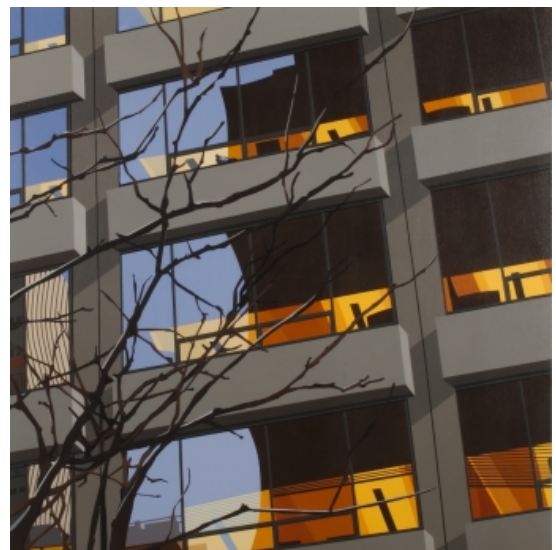
From 1999-2002 Fitzpatrick focused on a series of large canvasses, presenting fragments of commercial buildings painted in a flat style emphasizing abstract geometries and color relationships. More recently, additional layers of complexity have been added as representational elements have crept into the work. Presenting the curtain walls of contemporary high-rise office buildings as possessing dual surfaces qualities at once reflective and transparent, the artist reveals fragments of the lives of the buildings' inhabitants, and confronts the viewer with questions of depiction.

For the current exhibition, buildings in New York and Houston are the subjects of the work. Classic structures in each city (Lever House, NY; Pennzoil Tower and Enron Tower in Houston) as well as less distinctive buildings are subjected to Fitzpatrick's scrutiny. The new work we selected for this exhibition showcases the artist's increasing interest in a double approach to representation. Within the geometric constraints of his compositions there is a feeling of instability; a cacophony of confounding perspectives reveals a sensitivity to the humanity within these steel and glass structures.

Clint Willour, curator of the Galveston Arts Center, has curated a seven-year survey exhibition of Fitzpatrick's work entitled **Object Lessons**. The show begins with work from 1997, when the artist first returned to his native Texas after living in New York for several years following graduate school. The exhibition is on view at The Galveston Arts Center through January 9th, 2005, and will travel to Texas A&M-Commerce, and The Arlington Museum of Art. The exhibition is documented with a 32 page full-color catalogue, with essay by artist/writer Christopher French.



Tommy Fitzpatrick, *Transparency*, 2004  
acrylic on canvas, 80 x 45 inches



Tommy Fitzpatrick, *Park Ave*, 2004  
acrylic on canvas, 50 x 50 inches

Tommy Fitzpatrick lives and works in Arlington, Texas. Born in Dallas in 1969, Fitzpatrick received a B.A. in Art from University of Texas, Austin, and an M.F.A. degree from Yale University in 1993. This will be his fourth solo show at Inman Gallery since 1998; he will have a solo show at Charles Cowles Gallery, New York, this spring.

### **North Gallery:**

In the north gallery, Austin-based **Heyd Fontenot** presents a selection of new works on paper. Fontenot makes graphite and ink portraits of friends and acquaintances, creating an intimate, benign world where people float and perform cheerfully while unabashedly nude. These realistic, somewhat exaggerated caricatures exist in dream-like, pastoral settings. With a limited palette and minimal ornamentation, bursts of color or a pale hint of a wooded backdrop are the only distractions from the figure's fixed gaze. The portraits are vivid and unsophisticated, bucolic and playful. Whether these figures are depicted alone, with animals, or, in the case of "Michelle, 3 Times," with different versions of themselves, one can't help but feel grounded by the natural poise in each portrait. Fontenot has graciously extended his familiarity with these people towards the viewer. Meeting the steady gaze of these characters, the question arises: Is it naivete or confidence that make Fontenot's figures so appealing?

Heyd Fontenot is an artist who lives and works in Austin, Texas. This is his first solo show with Inman Gallery. Fontenot's work will be included in the upcoming group show at Diverseworks (January 28 – March 5, 2005) "Contemporary Erotic Drawing" co-curated by Sara Kellner (Diverseworks), Harry Philbrick (Aldrich Museum) and Stuart Horodner (independent curator, Portland). In 2002, he had a solo exhibition of paintings at Lawndale Art Center entitled "Suite Pink", an installation which transformed the gallery space using pink-on-pink striped walls and furniture as a setting for a suite of pink figurative paintings.

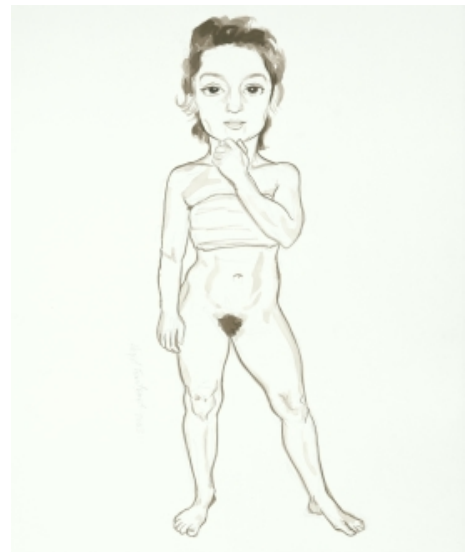
### **Upcoming gallery events:**

Inman Gallery will be participating in the new contemporary art fair ArtLA at the Santa Monica Civic Auditorium January 27 - 30, 2005.

February 25th - gallery opening for Amy Blakemore (new photographs) and Yuko Murata (paintings).



Heyd Fontenot, Leslie Holding a Little Johnny, 2004  
ink and graphite on paper, 14 1/8 x 10 1/4 inches



Heyd Fontenot, Eliza/Bruce, with Hand on Chin, 2003  
ink and graphite on paper, 17 x 14 inches

For more information about either exhibition, contact the gallery at 713.526.7800 or [info@inmangallery.com](mailto:info@inmangallery.com).